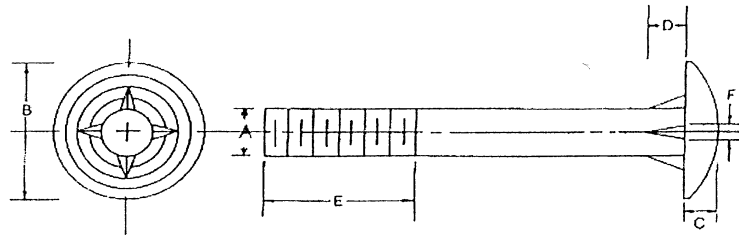




DESCRIPTION AND SIZE	CARTON QUANTITY	Weight Lbs/ M
DOMED HEAD TIMBER BOLTS, 4 FINS, RINGS UNDER THE HEAD SPECED 1/4" APART, PER THE PRINT AS ATTACHED		
1/2-13 X 8 4" Thread	60	478.4
1/2-13 X 10 4" Thread	40	566.6
1/2-13 X 12 6" Thread	40	654.8
5/8-11 X 8 4" Thread	35	798.1
5/8-11 X 10 4" Thread	25	939.2
5/8-11 X 12 6" Thread	23	1080.3
5/8-11 X 14 6" Thread	23	1221.3
5/8-11 X 16 6" Thread	20	1362.4
5/8-11 X 18 8" Thread	20	1503.5
5/8-11 X 20 8" Thread	19	1644.6
5/8-11 X 22 8" Thread	17	1785.7
5/8-11 X 24 8" Thread	15	1926.8
3/4-10 X 8 4" Thread	20	1269.8
3/4-10 X 10 4" Thread	15	1477.1
3/4-10 X 12 6" Thread	15	1684.3
3/4-10 X 14 6" Thread	15	1891.5
3/4-10 X 16 6" Thread	13	2098.8
3/4-10 X 18 8" Thread	12	2306.0
3/4-10 X 20 8" Thread	12	2513.2
3/4-10 X 22 8" Thread	10	2720.5
3/4-10 X 24 8" Thread	8	2927.7

Galvanized Timber Bolts

The Timber Bolt has been designed to protect your structure from the elements. Rings under the head, spaced 1/4 inch apart, block water from entering the bolt hole. Timber Bolts are furnished hot dipped galvanized for long steel life. All bolts are furnished with rolled threads.



A	B	C	D	E*	F
1/2"	1 3/4"	.275"	1/4"	6"	.200"
5/8"	2 1/4"	5/16"	5/8"	6"	1/4"
3/4"	2 5/8"	7/16"	3/4"	6"	1/4"
1"	3"	1/2"	1"	6"	5/16"

*ON BOLTS 12" AND LONGER

Because of their low head profile and large bearing surface timberbolts are widely used in the marine construction trade for piers, bulkheads and floating docks. Wooden bridges and structures are also ideal uses for these bolts.